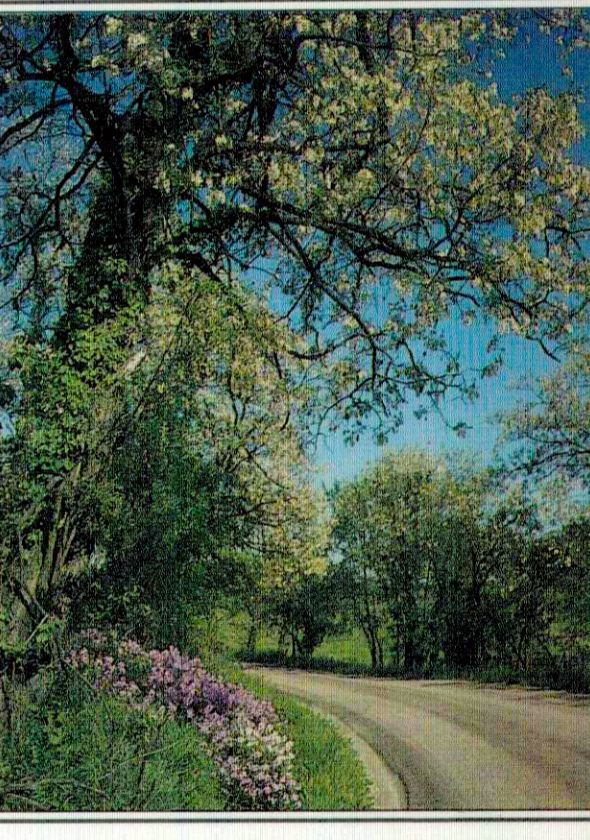


### MORGAN COUNTY CEMETERIES

GRIDER RD (1-79)	G-1	PHENIX RD (1-79)	B-7.8
GRIDER RD (1-79)	G-2	PHENIX RD (1-79)	B-8.4
GRIDER RD (1-79)	G-3	PHENIX RD (1-79)	B-9.0
GRIDER RD (1-79)	G-4	PHENIX RD (1-79)	B-9.6
GRIDER RD (1-79)	G-5	PHENIX RD (1-79)	B-10.2
GRIDER RD (1-79)	G-6	PHENIX RD (1-79)	B-10.8
GRIDER RD (1-79)	G-7	PHENIX RD (1-79)	B-11.4
GRIDER RD (1-79)	G-8	PHENIX RD (1-79)	B-12.0
GRIDER RD (1-79)	G-9	PHENIX RD (1-79)	B-12.6
GRIDER RD (1-79)	G-10	PHENIX RD (1-79)	B-13.2
GRIDER RD (1-79)	G-11	PHENIX RD (1-79)	B-13.8
GRIDER RD (1-79)	G-12	PHENIX RD (1-79)	B-14.4
GRIDER RD (1-79)	G-13	PHENIX RD (1-79)	B-15.0
GRIDER RD (1-79)	G-14	PHENIX RD (1-79)	B-15.6
GRIDER RD (1-79)	G-15	PHENIX RD (1-79)	B-16.2
GRIDER RD (1-79)	G-16	PHENIX RD (1-79)	B-16.8
GRIDER RD (1-79)	G-17	PHENIX RD (1-79)	B-17.4
GRIDER RD (1-79)	G-18	PHENIX RD (1-79)	B-18.0
GRIDER RD (1-79)	G-19	PHENIX RD (1-79)	B-18.6
GRIDER RD (1-79)	G-20	PHENIX RD (1-79)	B-19.2
GRIDER RD (1-79)	G-21	PHENIX RD (1-79)	B-19.8
GRIDER RD (1-79)	G-22	PHENIX RD (1-79)	B-20.4
GRIDER RD (1-79)	G-23	PHENIX RD (1-79)	B-21.0
GRIDER RD (1-79)	G-24	PHENIX RD (1-79)	B-21.6
GRIDER RD (1-79)	G-25	PHENIX RD (1-79)	B-22.2
GRIDER RD (1-79)	G-26	PHENIX RD (1-79)	B-22.8
GRIDER RD (1-79)	G-27	PHENIX RD (1-79)	B-23.4
GRIDER RD (1-79)	G-28	PHENIX RD (1-79)	B-24.0
GRIDER RD (1-79)	G-29	PHENIX RD (1-79)	B-24.6
GRIDER RD (1-79)	G-30	PHENIX RD (1-79)	B-25.2
GRIDER RD (1-79)	G-31	PHENIX RD (1-79)	B-25.8
GRIDER RD (1-79)	G-32	PHENIX RD (1-79)	B-26.4
GRIDER RD (1-79)	G-33	PHENIX RD (1-79)	B-27.0
GRIDER RD (1-79)	G-34	PHENIX RD (1-79)	B-27.6
GRIDER RD (1-79)	G-35	PHENIX RD (1-79)	B-28.2
GRIDER RD (1-79)	G-36	PHENIX RD (1-79)	B-28.8
GRIDER RD (1-79)	G-37	PHENIX RD (1-79)	B-29.4
GRIDER RD (1-79)	G-38	PHENIX RD (1-79)	B-30.0
GRIDER RD (1-79)	G-39	PHENIX RD (1-79)	B-30.6
GRIDER RD (1-79)	G-40	PHENIX RD (1-79)	B-31.2
GRIDER RD (1-79)	G-41	PHENIX RD (1-79)	B-31.8
GRIDER RD (1-79)	G-42	PHENIX RD (1-79)	B-32.4
GRIDER RD (1-79)	G-43	PHENIX RD (1-79)	B-33.0
GRIDER RD (1-79)	G-44	PHENIX RD (1-79)	B-33.6
GRIDER RD (1-79)	G-45	PHENIX RD (1-79)	B-34.2
GRIDER RD (1-79)	G-46	PHENIX RD (1-79)	B-34.8
GRIDER RD (1-79)	G-47	PHENIX RD (1-79)	B-35.4
GRIDER RD (1-79)	G-48	PHENIX RD (1-79)	B-36.0
GRIDER RD (1-79)	G-49	PHENIX RD (1-79)	B-36.6
GRIDER RD (1-79)	G-50	PHENIX RD (1-79)	B-37.2
GRIDER RD (1-79)	G-51	PHENIX RD (1-79)	B-37.8
GRIDER RD (1-79)	G-52	PHENIX RD (1-79)	B-38.4
GRIDER RD (1-79)	G-53	PHENIX RD (1-79)	B-39.0
GRIDER RD (1-79)	G-54	PHENIX RD (1-79)	B-39.6
GRIDER RD (1-79)	G-55	PHENIX RD (1-79)	B-40.2
GRIDER RD (1-79)	G-56	PHENIX RD (1-79)	B-40.8
GRIDER RD (1-79)	G-57	PHENIX RD (1-79)	B-41.4
GRIDER RD (1-79)	G-58	PHENIX RD (1-79)	B-42.0
GRIDER RD (1-79)	G-59	PHENIX RD (1-79)	B-42.6
GRIDER RD (1-79)	G-60	PHENIX RD (1-79)	B-43.2
GRIDER RD (1-79)	G-61	PHENIX RD (1-79)	B-43.8
GRIDER RD (1-79)	G-62	PHENIX RD (1-79)	B-44.4
GRIDER RD (1-79)	G-63	PHENIX RD (1-79)	B-45.0
GRIDER RD (1-79)	G-64	PHENIX RD (1-79)	B-45.6
GRIDER RD (1-79)	G-65	PHENIX RD (1-79)	B-46.2
GRIDER RD (1-79)	G-66	PHENIX RD (1-79)	B-46.8
GRIDER RD (1-79)	G-67	PHENIX RD (1-79)	B-47.4
GRIDER RD (1-79)	G-68	PHENIX RD (1-79)	B-48.0
GRIDER RD (1-79)	G-69	PHENIX RD (1-79)	B-48.6
GRIDER RD (1-79)	G-70	PHENIX RD (1-79)	B-49.2
GRIDER RD (1-79)	G-71	PHENIX RD (1-79)	B-49.8
GRIDER RD (1-79)	G-72	PHENIX RD (1-79)	B-50.4
GRIDER RD (1-79)	G-73	PHENIX RD (1-79)	B-51.0
GRIDER RD (1-79)	G-74	PHENIX RD (1-79)	B-51.6
GRIDER RD (1-79)	G-75	PHENIX RD (1-79)	B-52.2
GRIDER RD (1-79)	G-76	PHENIX RD (1-79)	B-52.8
GRIDER RD (1-79)	G-77	PHENIX RD (1-79)	B-53.4
GRIDER RD (1-79)	G-78	PHENIX RD (1-79)	B-54.0
GRIDER RD (1-79)	G-79	PHENIX RD (1-79)	B-54.6
GRIDER RD (1-79)	G-80	PHENIX RD (1-79)	B-55.2
GRIDER RD (1-79)	G-81	PHENIX RD (1-79)	B-55.8
GRIDER RD (1-79)	G-82	PHENIX RD (1-79)	B-56.4
GRIDER RD (1-79)	G-83	PHENIX RD (1-79)	B-57.0
GRIDER RD (1-79)	G-84	PHENIX RD (1-79)	B-57.6
GRIDER RD (1-79)	G-85	PHENIX RD (1-79)	B-58.2
GRIDER RD (1-79)	G-86	PHENIX RD (1-79)	B-58.8
GRIDER RD (1-79)	G-87	PHENIX RD (1-79)	B-59.4
GRIDER RD (1-79)	G-88	PHENIX RD (1-79)	B-60.0
GRIDER RD (1-79)	G-89	PHENIX RD (1-79)	B-60.6
GRIDER RD (1-79)	G-90	PHENIX RD (1-79)	B-61.2
GRIDER RD (1-79)	G-91	PHENIX RD (1-79)	B-61.8
GRIDER RD (1-79)	G-92	PHENIX RD (1-79)	B-62.4
GRIDER RD (1-79)	G-93	PHENIX RD (1-79)	B-63.0
GRIDER RD (1-79)	G-94	PHENIX RD (1-79)	B-63.6
GRIDER RD (1-79)	G-95	PHENIX RD (1-79)	B-64.2
GRIDER RD (1-79)	G-96	PHENIX RD (1-79)	B-64.8
GRIDER RD (1-79)	G-97	PHENIX RD (1-79)	B-65.4
GRIDER RD (1-79)	G-98	PHENIX RD (1-79)	B-66.0
GRIDER RD (1-79)	G-99	PHENIX RD (1-79)	B-66.6
GRIDER RD (1-79)	G-100	PHENIX RD (1-79)	B-67.2

## MORGAN COUNTY OHIO



JIM WAYMER, COUNTY ENGINEER  
TEL: (614) 962-3171

Board of Commissioners  
David Hooper, Chairman  
Robert T. Grove  
Phil Horner  
Tel: (614) 962-3183  
19 East Main Street  
McConnelsville, Ohio 43756

Photo by: Mark Spray

#### LEGEND

	State Highway		State Park
	County Highway		Wildlife Area
	Township Road		Ohio Power Recreation Land
	National Forest		Morgan's Raiders Trail

#### COUNTY STATISTICS

Population:	1960	12,9
	1970	12,3
	1980	14,2
	1990	14,1
Mileages:	State Highways	182
	County Highways	349
	Township Highways	398

Area: 421 Square Miles

Board of Commissioners  
David Hooper  
Robert T. Grove  
Phil Horner  
County Engineer  
JIM WAYMER